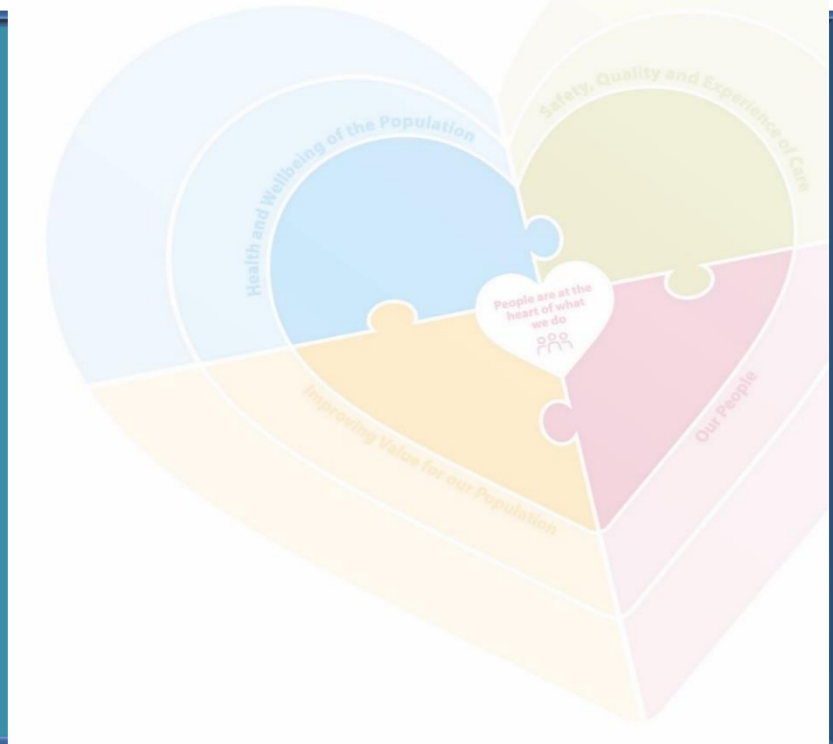




“The Day we went to Bangor”

House 10
Enterprise Court

Clare Sheridan-Henry Lead Mental Health OT / Resettlement Project Lead & Team



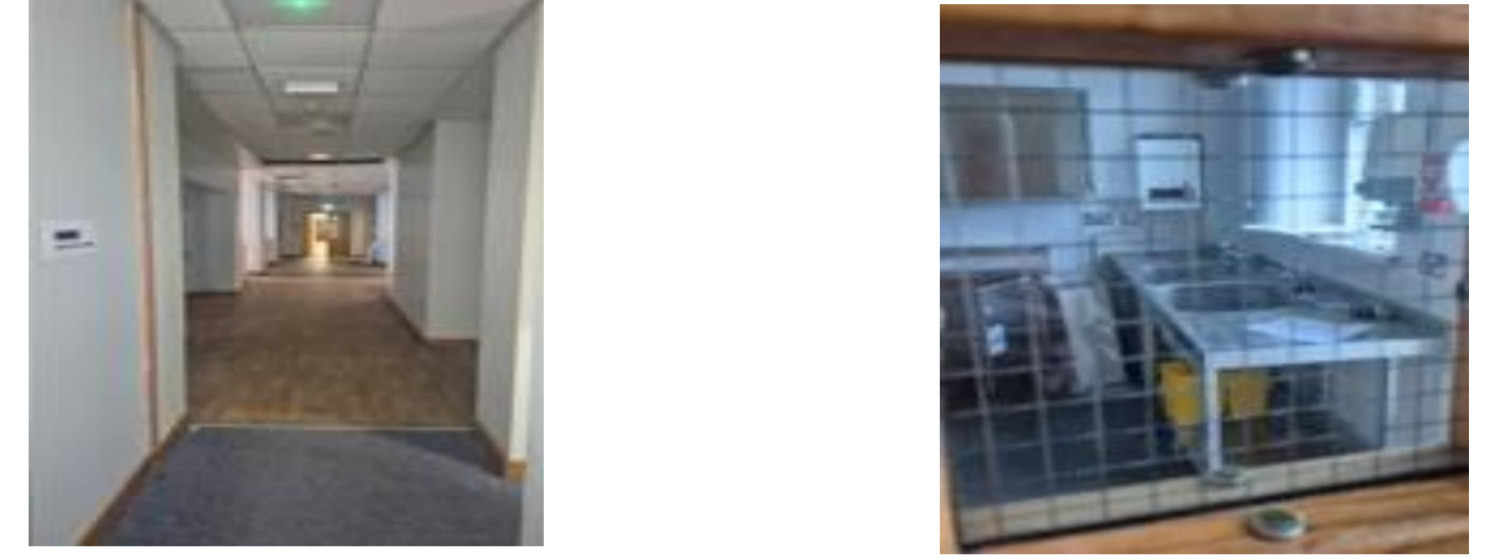
Background

A hospital should never have to be your home!



Aim

Any where is more homely than a locked ward in a Victorian Institution!



Partnership between SET MHS, Choice Housing & Inspire Staffing

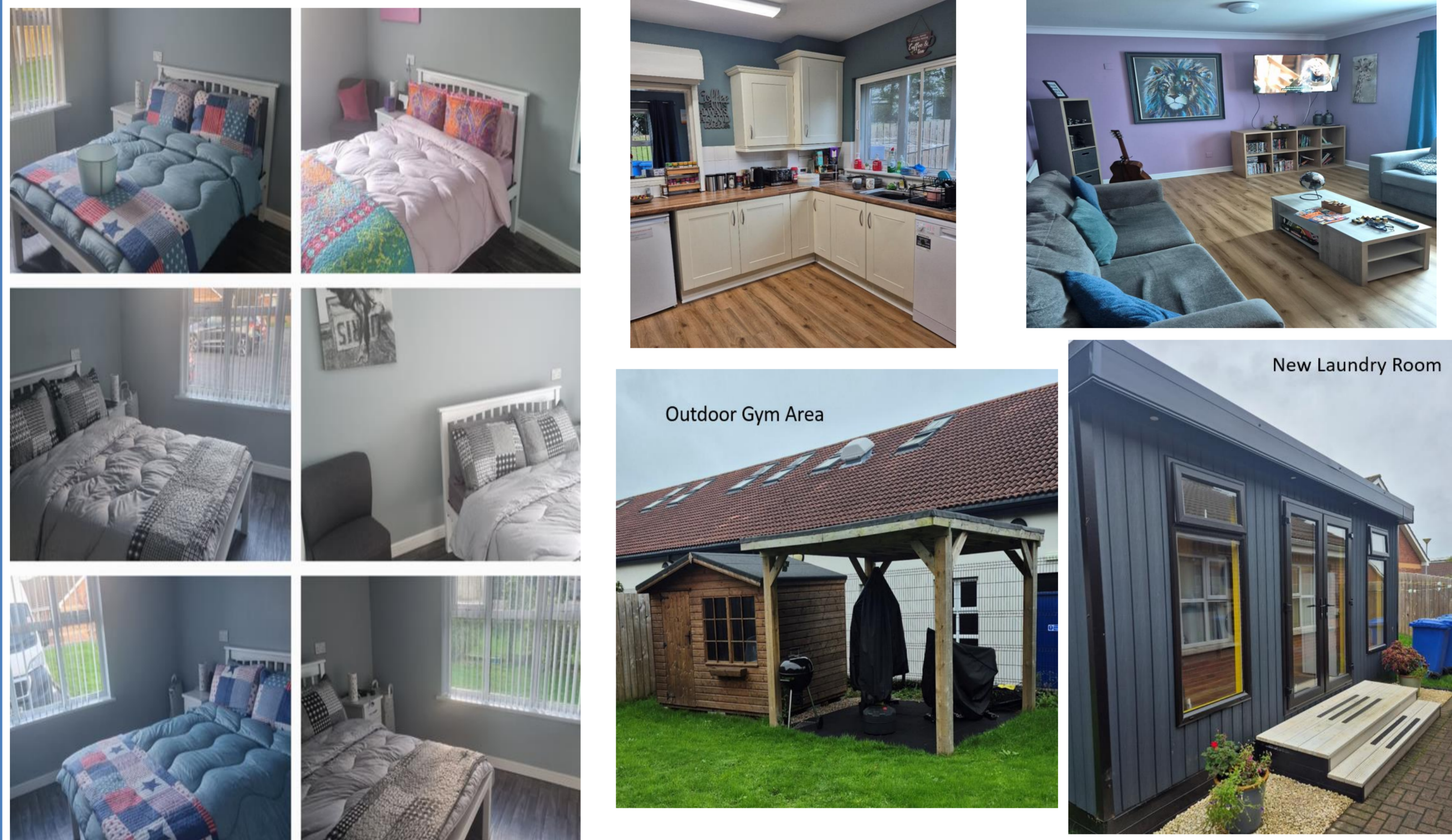
Occupational Therapy and an enriching environment enables recovery and well-being.



Results

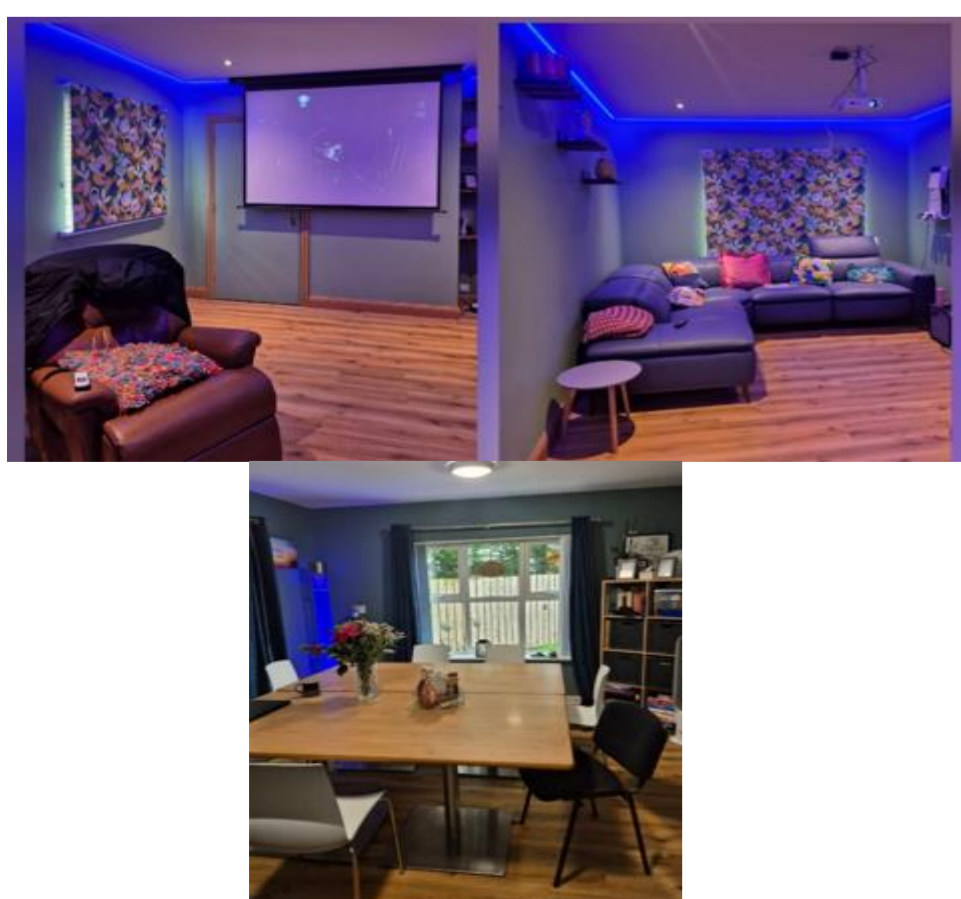
Everyone deserves a place to call home even with intensive mental health support needs.
6 bedded bungalow all with en-suite showers.
On-site Occupational Therapy and an enriching environment enables recovery and well-being.

It saves money and ultimately saves lives



2025 improvements

2025 Improvements = Cinema Room / Sensory Space, repainted and floored, new soft furnishings all chosen by the tenants



All engaging in OT Rehab & community reintegration.

- Made meals for family.
- Been on Holiday with family.
- Been to Pride.
- Been on day trips throughout NI.
- Own bedroom after 27 years in hospital.
- Had hair cut for first time in 2+ years.
- 5/6 no readmission.
- Decreased aggression / incidents ++++++
- Significantly less PRN Medication Used.
- X1 Discharge as achieved sustained recovery.
- X1 New Admission

Limited use of Restrictive Practices and only following Best Interests Determinations / MCA / DoLS
X1 person readmitted very briefly twice for medication optimisation in first year.

Approx. x10 cheaper than PICU Care
(Locked Ward = £250k/year)

