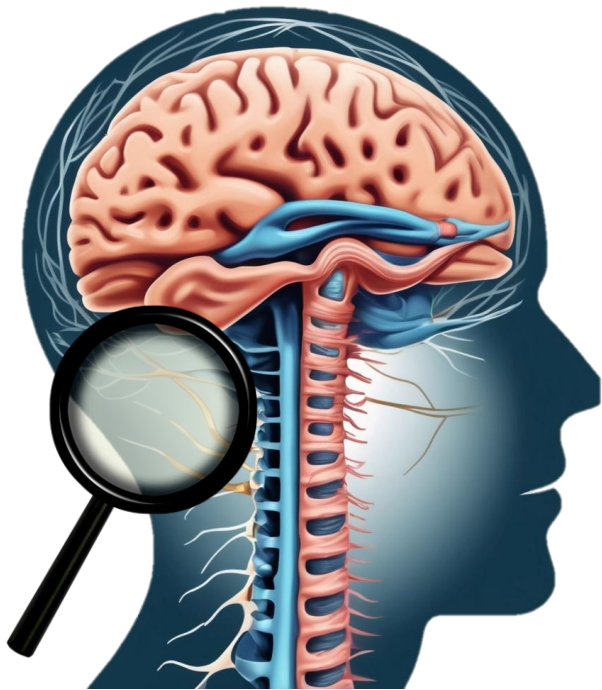




Department of
Health

www.health-ni.gov.uk

Neurology Services Review Questionnaire



**What do
you think?**

Do you think the idea
is a good one?



Yes



Not sure



No



We want to make neurology
services in Northern Ireland better.

Tell us what you think about our
plans.

Information



We have made a plan to make neurology services better.



Please tell us what you think of our plan by the 6th August 2025.



You can email your answers to Neurology.Review@health-ni.gov.uk .



Or you can post your answers to
Regional Health Services Transformation
Directorate
Neurology Review – Consultation
Department of Health
Annexe 3
Castle Buildings
Stormont Estate
Belfast BT4 3SQ

About you



Name



Please tell us the first part of your postcode



Email



Please tell us if you want to keep your name private.



Yes

No



Are you answering as part of a group?



Yes

No



Name of group



1. Neurology services problems

Do you agree with the problems we found in neurology services?



Agree a lot



Agree



Not sure



Disagree



Disagree a lot



Think about things like

- Have you had to wait a long time to see a neurology doctor?
- Are your appointments always needed?
- Would better support while waiting to see a neurology doctor be helpful?
- What support do you have at the moment and where can you get it?
- What type of support would you find helpful? Can you get this support?



Is there anything else you would like to tell us about this?

A large, empty rectangular box with a thin black border, intended for the user to provide their response to the question above.



2. Our vision – what we want

Do you agree with our vision for better neurology services? The plan says services should be

1. Person Centred

This means we put patients needs first.

2. Joined-up

This mean working together with other services.

3. Responsive

This means quick to help people.

4. Based on evidence

This means using research to make decisions.

5. Properly resourced

This means having enough staff and money to run well.



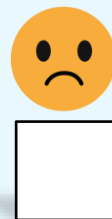
Agree a lot



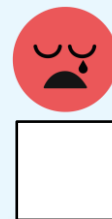
Agree



Not sure



Disagree



Disagree a lot



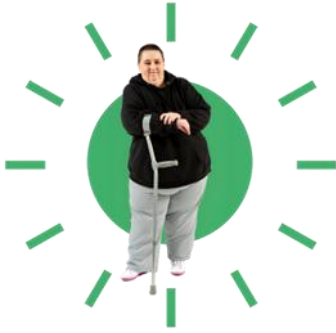
Think about things like

- Do you think this is the right way to make services better?
- Should everyone in Northern Ireland be able to get the same care?
- Should you be able to get more services locally?



Is there anything else you would like to tell us about this?

A large, empty rectangular box with a black border, intended for the user to provide their response to the question above.



3. Priority 1. Person-Centred Care

a. Do you agree that neurology services should put the needs of each patient first?



Agree a lot



Agree



Not sure



Disagree



Disagree a lot



Think about things like

- Should services be made to fit your needs?
- Is good communication with doctors and nurses important?
- Would having a **designated person** help you? This means 1 person has the job of sorting out your care.



b. Do you agree with what we want to do to make services more person-centred?



Agree a lot



Agree



Not sure



Disagree



Disagree a lot



Is there anything else you would like to tell us about this?

A large, empty rectangular box with a thin black border, intended for the user to provide their response to the question above.



4. Priority 2. More Neurology Staff

a. Do you agree that neurology services need more staff?



Think about things like

- Do current staff meet your needs?
- Would more staff make care and support better?
- Would having neurology staff closer to home help?



b. Do you agree with what we want to do to have more neurology staff?





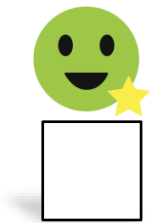
Is there anything else you would like to tell us about this?

A large, empty rectangular box with a black border, intended for the user to provide their response to the question above.



5. Priority 3. Fixing Gaps in Services

a. Do you agree that fixing gaps in neurology services is important?



Agree a lot



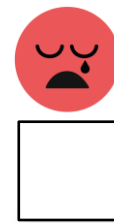
Agree



Not sure



Disagree



Disagree a lot



Think about things like

- Can you get the care you need when you need it?
- What services do you need that you can not get now?
- Would a care pathway help? This is a plan for your care and treatment



b. Do you agree with what we want to do to fix the gaps in services.



Agree a lot



Agree



Not sure



Disagree



Disagree a lot



Is there anything else you would like to tell us about this?

A large, empty rectangular box with a thin black border, intended for the user to provide their response to the question above.



6. Priority 4. Making better use of **resources**

a. Do you agree that neurology services should use their **resources** better?

Resources are things that help us give care to people. For example, staff and money.

 <input type="checkbox"/>	 <input type="checkbox"/>	 <input type="checkbox"/>	 <input type="checkbox"/>	 <input type="checkbox"/>
Agree a lot	Agree	Not sure	Disagree	Disagree a lot



Think about things like

- Can you get the help you need when you need it?
- How often do you need check-ups with your neurologist?
- Could other staff members help?



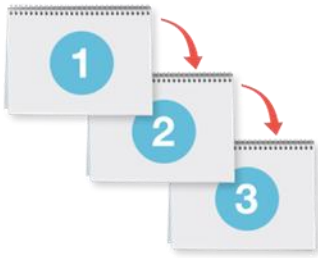
b. Do you agree with what we want to do to use **resources** better?

 <input type="checkbox"/>	 <input type="checkbox"/>	 <input type="checkbox"/>	 <input type="checkbox"/>	 <input type="checkbox"/>
Agree a lot	Agree	Not sure	Disagree	Disagree a lot



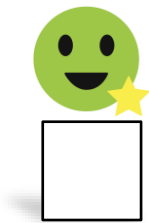
Is there anything else you would like to tell us about this?

A large, empty rectangular box with a black border, intended for the user to provide their response to the question above.



7. Next Steps

- a. Do you agree with the planned next steps to make neurology services better?



Agree a lot



Agree



Not sure



Disagree



Disagree a lot



Think about things like

- Will these changes make your care and support better?
- Will these changes make it easier to get the services you need?
- Do you think extra money is needed to make these changes?



Is there anything else you would like to tell us about this?

A large, empty rectangular box with a thin black border, intended for the user to provide their response to the question above.



8. Equality Screening

Do you agree or disagree with how **equality** was thought about in the Review?

Equality means treating everyone fairly no matter who they are.



Agree a lot



Agree



Disagree



Disagree a lot



Is there anything else you would like to tell us about this?



9. Rural Needs

Do you agree or disagree with how **rural needs** were considered in the Review?

Rural needs are the things that people in the countryside need to live well.



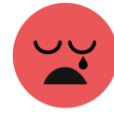
Agree a lot



Agree



Disagree



Disagree a lot



Is there anything else you would like to tell us about this?